

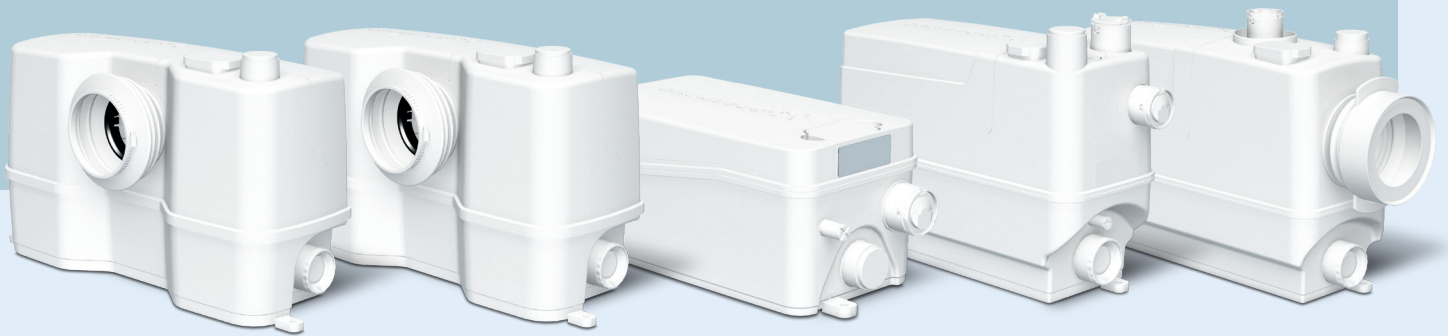
Grundfos SOLOLIFT2 RANGE

# Lifting stations & macerators

- Clean & easy maintenance
- 5 products cover most applications
- Flexible & easy installation

GRUNDFOS 2026  
**CASHBACK  
PROMOTION**

25 May - 31 Dec



**SOLOLIFT2 is a range of compact, high-performance lifting stations and macerators that enable wastewater drainage almost anywhere.**

Ideal for kitchens, toilets and bathrooms, these lifting stations and macerators pump to the nearest downpipe and connect back to the existing gravity drain—so you can place fixtures and appliances where you want, without worrying about drain location, while staying protected against sewer backflow for complete peace of mind.

## Why choose SOLOLIFT2?

- Maintenance and service friendly
- Removable and dry compact pump-motor unit
- Dry and clean access to the level switch unit
- Separate drain function of the tank
- Anti-blocking function by a screw driver without opening the unit
- In case of service the unit can stay in place



Learn more about the SOLOLIFT2 range

**GRAB A  
GRUNDFOS!  
SOLOLIFT2  
\$50  
CASHBACK\***

Scan QR code to claim your cashback. It's quick and easy!



**GRUNDFOS**

\* Includes all Grundfos SOLOLIFT2 models. Terms and conditions apply. See registration form for full details.

**GRUNDFOS**

Possibility in every drop



### C-3 Lifting Station:

#### 3 connections

- Ideal for light commercial use, handling grey wastewater up to 90°C (30 min) from washers and dishwashers. 3 different appliances in total e.g:  
1 x washing machine and/or dishwasher  
1 x washbasin or kitchen sink  
1 x bathtub and/or cabinet shower
- Fits into pre-wall installations and has 20 mm free passage



#### Discharge connection: Ø25

- Adaptors to suit: Ø22/28/32/36/40

#### Additional inlet: Ø40

- Adaptors to suit: 1 x Ø32/36 at the top
- Adaptors to suit: 2 x Ø36/50 on the left and right sides of the tank



### D-2 Lifting Station:

#### 2 connections

- Extremely compact variant for pumping grey wastewater from 2 different sanitary appliances e.g:  
1 x washbasin  
1 x cabinet shower or bidet



#### Discharge connection:

- Adaptors to suit Ø22/32

#### Additional inlet: Ø40

- Adaptors to suit: 2 x Ø36/50 on the left and right sides of the tank



### WC-1 Lifting Station with Macerator:

#### Toilet + 1 connection

- Suitable for pumping wastewater from:  
1 x toilet (base stand)
- Additional sanitary appliances optional e.g:  
1 x washbasin, 1 x urinal



#### Discharge connection: Ø25

- Adaptors to suit: Ø22/28/32/36/40

#### Additional inlet: Ø40

- Adaptors to suit 32/36 at the top

● Fixed Inlet

● Additional optional Inlet



### WC-3 Lifting Station with Macerator:

#### Toilet + 3 connections

- Suitable for pumping wastewater from:  
1 x toilet (base stand)
- Additional sanitary appliances optional e.g:  
1 x washbasin  
1 x cabinet shower  
1 x a urinal or bidet



#### Discharge connection: Ø25

- Adaptors to suit: Ø22/28/32/36/40

#### Additional inlet: Ø40

- Adaptors to suit: 1 x Ø32/36 at the top
- Adaptors to suit: 2 x Ø36/50 on the left and right sides of the tank

● Fixed Inlet

● Additional optional Inlet



### CWC-3 Lifting Station with Macerator:

#### Wall hung toilet + 3 connections

- Suitable for pumping wastewater from:  
1 x toilet wall hung
- Additional sanitary appliances optional e.g:  
1 x washbasin  
1 x cabinet shower  
1 x urinal or bidet



#### Discharge connection: Ø25

- Adaptors to suit: Ø22/28/32/36/40

#### Additional inlet: Ø40

- Adaptors to suit: 1 x Ø32/36 at the top
- Adaptors to suit: 2 x Ø36/50 on the left and right sides of the tank

● Fixed Inlet

● Additional optional Inlet